

Science - Animals Including Humans

Key Vocabulary

Digestion	The process in which the body breaks food down, taking the nutrients to create energy.
Mouth	The parts of the body that make up the digestive system.
Saliva	
Oesophagus	
Stomach	
Intestines	
Rectum	
Food Chain	A series of organisms, each dependent on the next as a source of food.
Organism	A living thing

Babies are usually born without any teeth but they begin to show by the time they are six months old.

The first baby or milk teeth are gradually replaced by adult teeth between the ages of six and fourteen.

Do you have any gaps at the moment? How many adult teeth do you have?

Don't forget to brush your teeth twice a day!

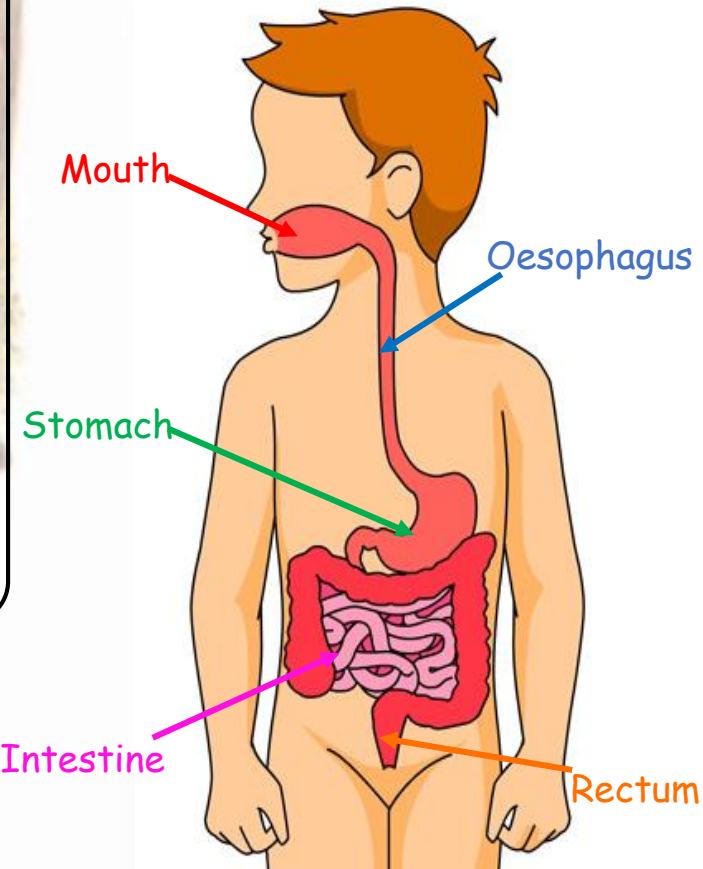
Food starts in the mouth where it is chewed and swallowed before passing down the oesophagus into the stomach. Nutrients and moisture are absorbed in the intestines before the waste is stored in the rectum.

Do you know what happens to the food in the stomach?



How many teeth do humans have?

Digestive System



The digestive system describes the parts of the body that process the food that we eat by breaking it down and absorbing the nutrients that we need for energy. Can you name any other systems in the human body?

Science - Animals Including Humans

Key Vocabulary

Food Chains

Canine	The four types of teeth
Incisor	
Molar	
Premolar	
Herbivore	An animal that only eats plants
Carnivore	An animal that only eats meat
Omnivore	An animal that eats both meat and plants

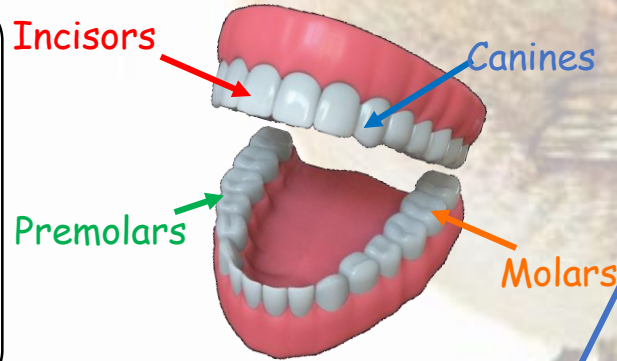
Every food chain starts with a plant, because they are the organisms that can make their own energy. When an animal eats the plant, they are getting that energy from the plant. Similarly, as each animal gets eaten, that energy gets passed on.

Some food chains only have three organisms as in the diagram below, but they can go on much further.

Can you think of a food chain that includes 5 organisms?

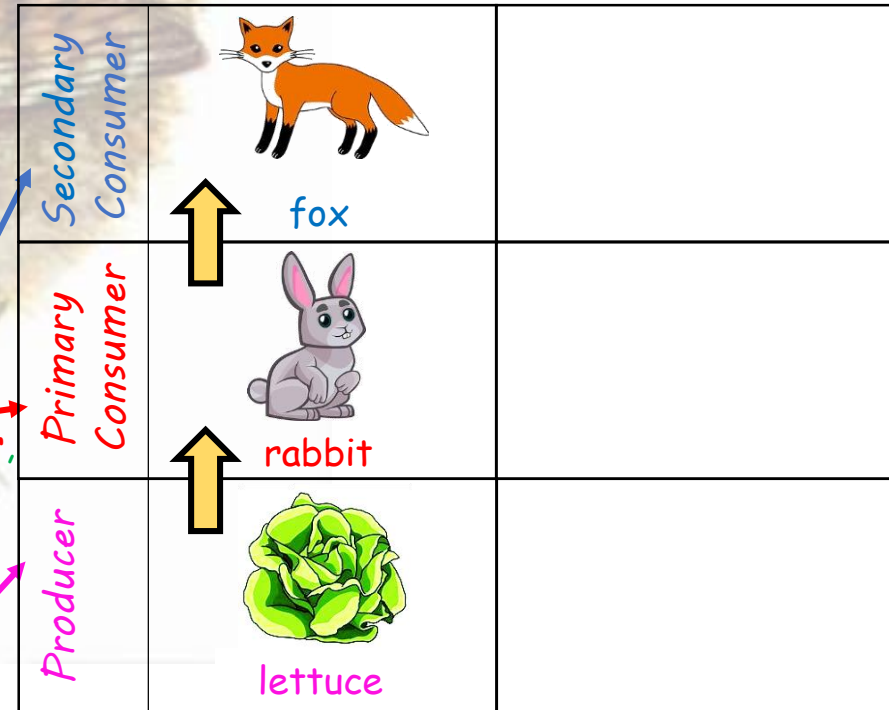
Can you write your own food chain in these boxes?

The different teeth have different functions- incisors are for biting, canines for tearing and premolars and molars are for grinding.
Can you name the different types of teeth in your mouth?



Any animal that eats another is called a consumer.
The first is the primary consumer, then the secondary and so on.

The plant in a food chain is called a producer because it produces the energy



What sort of teeth do you think a tiger or a sheep might have?