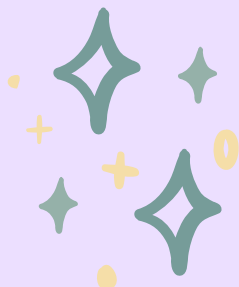


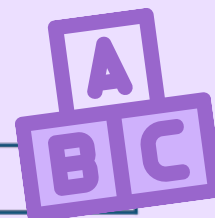


## Spelling Progression at Wren's Nest Primary School



Year 1			
Use Read Write Inc. Phonics in Y1 and Read Write Inc. Spelling in Y2, when children have completed the Phonics programme. There is extra support material for Y1 on the online resource for Spelling, including consolidation sessions, Practice Tests and a matching chart.			
Year 2 – Year 6			
Initial assessment and consolidation is recommended for all children, using the pre-programme activities. Children starting RWI Spelling in all years must be fluent readers (at the equivalent of NC Level 2A). Complete the pre-programme activities (from Practice Book 2A pp.2–5; also online) to assess and consolidate children's knowledge of phonics and of the statutory requirements for Y1 of the Spelling Appendix for the National Curriculum in England. See the 'Getting started' PDF for more information. Initial assessment is also available for later starters using the End of Year Practice Tests. RWI Spelling is designed to be taught in year groups, following the age-related expectations of the new National Curriculum in England. However...			
Year 3	Year 4	Year 5	Year 6
If children are Y3 but are not ready to start Y3 of RWI Spelling, assess them using the Y2B End of Year Practice Test. If they score full marks or nearly full marks, start them on Y3. If they score lower, start them on Y2A and/or consolidate Y1, depending on their needs.	If children are Y4 but are not ready to start at Y4 of RWI Spelling, assess them using the Y3 End of Year Practice Test. If they score full marks or nearly full marks, start them on Y4. If they score lower, try the Y2B End of Year Practice Test. Continue until you have placed children.	If children are Y5 but are not ready to start at Y5 of RWI Spelling, assess them using the Y4 End of Year Practice Test. If they score full marks or nearly full marks, start them on Y5. If they score lower, try the Y3 End of Year Practice Test. Continue until you have placed children.	If children are Y6 but are not ready to start at Y6 of RWI Spelling, assess them using the Y5 End of Year Practice Test. If they score full marks or nearly full marks, start them on Y6. If they score lower, try the Y4 End of Year Practice Test. Continue until you have placed children.





## Spelling – work for year 1

### Revision of reception work

The boundary between revision of work covered in Reception and the introduction of new work may vary according to the programme used, but basic revision should include:

- all letters of the alphabet and the sounds which they most commonly represent
- consonant digraphs which have been taught and the sounds which they represent
- vowel digraphs which have been taught and the sounds which they represent
- the process of segmenting spoken words into sounds before choosing graphemes to represent the sounds
- words with adjacent consonants
- guidance and rules which have been taught

Statutory requirements	Rules and guidance (non-statutory)	Example words (non-statutory)
The sounds /f/, /l/, /s/, /z/ and /k/ spelt ff, ll, ss, zz and ck	The /f/, /l/, /s/, /z/ and /k/ sounds are usually spelt as <b>ff</b> , <b>ll</b> , <b>ss</b> , <b>zz</b> and <b>ck</b> if they come straight after a single vowel letter in short words. <b>Exceptions:</b> if, pal, us, bus, yes.	off, well, miss, buzz, back
The /ŋ/ sound spelt n before k		bank, think, honk, sunk
Division of words into syllables	Each syllable is like a 'beat' in the spoken word. Words of more than one syllable often have an unstressed syllable in which the vowel sound is unclear.	pocket, rabbit, carrot, thunder, sunset

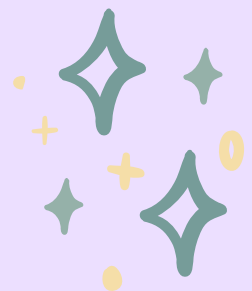
Statutory requirements	Rules and guidance (non-statutory)	Example words (non-statutory)
-tch	The /tʃ/ sound is usually spelt as <b>tch</b> if it comes straight after a single vowel letter. <b>Exceptions:</b> rich, which, much, such.	catch, fetch, kitchen, notch, hutch
The /v/ sound at the end of words	English words hardly ever end with the letter <b>v</b> , so if a word ends with a /v/ sound, the letter <b>e</b> usually needs to be added after the 'v'.	have, live, give
Adding s and es to words (plural of nouns)	If the ending sounds like /s/ or /z/, it is spelt as <b>-s</b> . If the ending sounds like /ɪz/ and forms an	cats, dogs, spends, rocks, thanks, catches



# Spelling Progression at Wren's Nest Primary School



Statutory requirements	Rules and guidance (non-statutory)	Example words (non-statutory)
and the third person singular of verbs)	extra syllable or 'beat' in the word, it is spelt as <b>-es</b> .	
Adding the endings <b>-ing</b> , <b>-ed</b> and <b>-er</b> to verbs where no change is needed to the root word	<b>-ing</b> and <b>-er</b> always add an extra syllable to the word and <b>-ed</b> sometimes does. The past tense of some verbs may sound as if it ends in /ɪd/ (extra syllable), /d/ or /t/ (no extra syllable), but all these endings are spelt <b>-ed</b> . If the verb ends in two consonant letters (the same or different), the ending is simply added on.	hunting, hunted, hunter, buzzing, buzzed, buzzer, jumping, jumped, jumper
Adding <b>-er</b> and <b>-est</b> to adjectives where no change is needed to the root word	As with verbs (see above), if the adjective ends in two consonant letters (the same or different), the ending is simply added on.	grander, grandest, fresher, freshest, quicker, quickest



# Spelling Progression at Wren's Nest Primary School

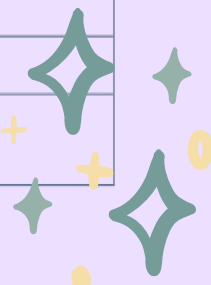


## Vowel digraphs and trigraphs

Some may already be known, depending on the programmes used in Reception, but some will be new.

Vowel digraphs and trigraphs	Rules and guidance (non-statutory)	Example words (non-statutory)
ai, oi	The digraphs ai and oi are virtually never used at the end of English words.	rain, wait, train, paid, afraid oil, join, coin, point, soil
ay, oy	<b>ay</b> and <b>oy</b> are used for those sounds at the end of words and at the end of syllables.	day, play, say, way, stay boy, toy, enjoy, annoy
a-e		made, came, same, take, safe
e-e		these, theme, complete
i-e		five, ride, like, time, side
o-e		home, those, woke, hope, hole
u-e	Both the /u:/ and /ju:/ ('oo' and 'yoo') sounds can be spelt as <b>u-e</b> .	June, rule, rude, use, tube, tune
ar		car, start, park, arm, garden
ee		see, tree, green, meet, week
ea (/i:/)		sea, dream, meat, each, read (present tense)
ea (/ɛ/)		head, bread, meant, instead, read (past tense)
er (/ɜ:/)		(stressed sound): her, term, verb, person (unstressed <i>schwa</i> sound): better,
er (/ə/)		under, summer, winter, sister girl, bird, shirt, first, third
ir		turn, hurt, church, burst, Thursday
ur		

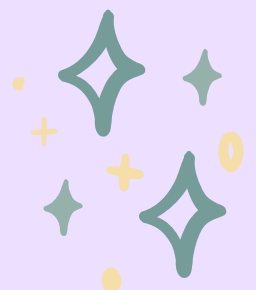
Vowel digraphs and trigraphs	Rules and guidance (non-statutory)	Example words (non-statutory)
oo (/u:/)	Very few words end with the letters <b>oo</b> , although the few that do are often words that primary children in year 1 will encounter, for example, zoo	food, pool, moon, zoo, soon
oo (/ʊ/)		book, took, foot, wood, good
oa	The digraph <b>oa</b> is very rare at the end of an English word.	boat, coat, road, coach, goal



# Spelling Progression at Wren's Nest Primary School



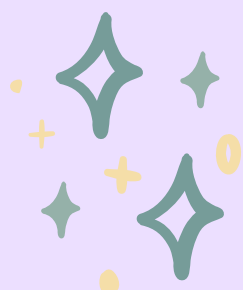
Vowel diagraphs and trigraphs	Rules and guidance (non-statutory)	Example words (non-statutory)
oe ou		toe, goes
	The only common English word ending in <b>ou</b> is <i>you</i> .	out, about, mouth, around, sound
ow (/aʊ/) ow (/əʊ/) ue ew	Both the /u:/ and /ju:/ ('oo' and 'yoo') sounds can be spelt as <b>u-e</b> , <b>ue</b> and <b>ew</b> . If words end in the /oo/ sound, <b>ue</b> and <b>ew</b> are more common spellings than <b>oo</b> .	now, how, brown, down, town own, blow, snow, grow, show blue, clue, true, rescue, Tuesday new, few, grew, flew, drew, threw
ie (/aɪ/)		lie, tie, pie, cried, tried, dried
ie (/i:/)		chief, field, thief
igh		high, night, light, bright, right
or		for, short, born, horse, morning
ore		more, score, before, wore, shore
aw		saw, draw, yawn, crawl
au		author, August, dinosaur, astronaut
air		air, fair, pair, hair, chair
ear		dear, hear, beard, near, year
ear (/ɛə/)		bear, pear, wear
are (/ɛə/)		bare, dare, care, share, scared



# Spelling Progression at Wren's Nest Primary School



Vowel digraphs and trigraphs	Rules and guidance (non-statutory)		Example words (non-statutory)
Statutory requirements	Rules and guidance (non-statutory)	Example words (non-statutory)	
Words ending –y (/i:/ or /ɪ/)		very, happy, funny, party, family	
New consonant spellings ph and wh	The /f/ sound is not usually spelt as <b>ph</b> in short everyday words (e.g. <i>fat, fill, fun</i> ).	dolphin, alphabet, phonics, elephant when, where, which, wheel, while	
Using k for the /k/ sound	The /k/ sound is spelt as <b>k</b> rather than as <b>c</b> before <b>e, i</b> and <b>y</b> .	Kent, sketch, kit, skin, frisky	
Adding the prefix –un	The prefix <b>un–</b> is added to the beginning of a word without any change to the spelling of the root word.	unhappy, undo, unload, unfair, unlock	
Compound words	Compound words are two words joined together. Each part of the longer word is spelt as it would be if it were on its own. Pupils' attention should be	football, playground, farmyard, bedroom, blackberry	
Common exception words	drawn to the grapheme-phoneme correspondences that do and do not fit in with what has been taught so far.	the, a, do, to, today, of, said, says, are, were, was, is, his, has, I, you, your, they, be, he, me, she, we, no, go, so, by, my, here, there, where, love, come, some, one, once, ask, friend, school, put, push, pull, full, house, our – and/or others, according to the programme used	





## Spelling – work for Year 2

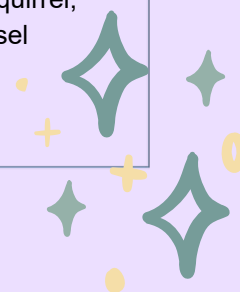
### Revision of work from year 1

As words with new GPCs are introduced, many previously-taught GPCs can be revised at the same time as these words will usually contain them.

### New work for year 2

Statutory requirements	Rules and guidance (non-statutory)	Example words (non-statutory)
The /dʒ/ sound spelt as ge and dge at the end of words, and sometimes spelt as g elsewhere in words before e, i and y	<p>The letter j is never used for the /dʒ/ sound at the end of English words.</p> <p>At the end of a word, the /dʒ/ sound is spelt <b>–dge</b> straight after the /æ/, /ɛ/, /ɪ/, /ɒ/, /ʌ/ and /ʊ/ sounds (sometimes called ‘short’ vowels).</p> <p>After all other sounds, whether vowels or consonants, the /dʒ/ sound is spelt as <b>–ge</b> at the end of a word.</p> <p>In other positions in words, the /dʒ/ sound is often (but not always) spelt as g before e, i, and y. The /dʒ/ sound is always spelt as j before a, o and u.</p>	<p>badge, edge, bridge, dodge, fudge</p> <p>age, huge, change, charge, bulge, village</p> <p>gem, giant, magic, giraffe, energy</p> <p>jacket, jar, jog, join, adjust</p>
The /s/ sound spelt c before e, i and y		race, ice, cell, city, fancy
The /n/ sound spelt kn and (less often) gn at the beginning of words	The ‘k’ and ‘g’ at the beginning of these words was sounded hundreds of years ago.	knock, know, knee, gnat, gnaw
The /r/ sound spelt wr at the beginning of words	This spelling probably also reflects an old pronunciation.	write, written, wrote, wrong, wrap
The /l/ or /əl/ sound spelt –le at the end of words	The <b>–le</b> spelling is the most common spelling for this sound at the end of words.	table, apple, bottle, little, middle

Statutory requirements	Rules and guidance (non-statutory)	Example words (non-statutory)
The /l/ or /əl/ sound spelt –el at the end of words	<p>The <b>–el</b> spelling is much less common than <b>–le</b>.</p> <p>The <b>–el</b> spelling is used after <b>m, n r s y w</b> and more often than not after <b>s</b></p>	<p>camel, tunnel, squirrel, travel, towel, tinsel</p>

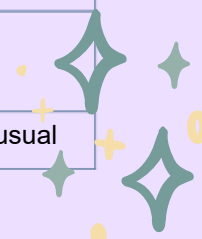


# Spelling Progression at Wren's Nest Primary School



Statutory requirements	Rules and guidance (non-statutory)	Example words (non-statutory)
The // or /ə/ sound spelt –al at the end of words	Not many nouns end in –al, but many adjectives do.	metal, pedal, capital, hospital, animal
Words ending –il	There are not many of these words.	pencil, fossil, nostril
The /aɪ/ sound spelt –y at the end of words	This is by far the most common spelling for this sound at the end of words.	cry, fly, dry, try, reply, July
Adding –es to nouns and verbs ending in –y	The <b>y</b> is changed to <b>i</b> before –es is added.	flies, tries, replies, copies, babies, carries
Adding –ed, –ing, –er and –est to a root word ending in –y with a consonant before it	The <b>y</b> is changed to <b>i</b> before –ed, –er and –est are added, but not before –ing as this would result in <b>ii</b> . The only ordinary words with <b>ii</b> are <i>skiing</i> and <i>taxiing</i> .	copied, copier, happier, happiest, cried, replied ...but copying, crying, replying
Adding the endings –ing, –ed, –er, –est and –y to words ending in –e with a consonant before it	The –e at the end of the root word is dropped before –ing, –ed, –er, –est, –y or any other suffix beginning with a vowel letter is added. <b>Exception:</b> <i>being</i> .	hiking, hiked, hiker, nicer, nicest, shiny
Adding –ing, –ed, –er, –est and –y to words of one syllable ending in a single consonant letter after a single vowel letter	The last consonant letter of the root word is doubled to keep the /æ/, /ɛ/, /ɪ/, /ɒ/ and /ʌ/ sound (i.e. to keep the vowel 'short'). <b>Exception:</b> The letter 'x' is never doubled: <i>mixing, mixed, boxer, sixes</i> .	patting, patted, humming, hummed, dropping, dropped, sadder, saddest, fatter, fattest, runner, runny
The /ɔ:/ sound spelt a before l and ll	The /ɔ:/ sound ('or') is usually spelt as <b>a</b> before l and ll.	all, ball, call, walk, talk, always
The /ʌ/ sound spelt o		other, mother, brother, nothing, Monday

Statutory requirements	Rules and guidance (non-statutory)	Example words (non-statutory)
The /i:/ sound spelt –ey	The plural of these words is formed by the addition of –s ( <i>donkeys, monkeys</i> , etc.).	key, donkey, monkey, chimney, valley
The /ɒ/ sound spelt a after w and qu	<b>a</b> is the most common spelling for the /ɒ/ ('hot') sound after <b>w</b> and <b>qu</b> .	want, watch, wander, quantity, squash
The /ɜ:/ sound spelt or after w	There are not many of these words.	word, work, worm, world, worth
The /ɔ:/ sound spelt ar after w		war, warm, towards
The /ɜ/ sound spelt s	There are not many of these words.	
		television, treasure, usual

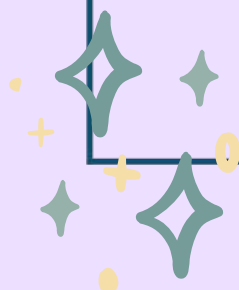


# Spelling Progression at Wren's Nest Primary School



Statutory requirements	Rules and guidance (non-statutory)	Example words (non-statutory)
The suffixes –ment, –ness, –ful, –less and –ly	If a suffix starts with a consonant letter, it is added straight on to most root words without any change to the last letter of those words. <b>Exceptions:</b> (1) <i>argument</i> (2) root words ending in –y with a consonant before it but only if the root word has more than one syllable.	enjoyment, sadness, careful, playful, hopeless, plainness (plain + ness), badly  merriment, happiness, plentiful, penniless, happily
Contractions	In contractions, the apostrophe shows where a letter or letters would be if the words were written in full (e.g. <i>can't</i> – <i>cannot</i> ). <i>It's</i> means <i>it is</i> (e.g. <i>It's</i> raining) or sometimes <i>it has</i> (e.g. <i>It's</i> been raining), but <i>it's</i> is never used for the possessive.	can't, didn't, hasn't, couldn't, it's, I'll
The possessive apostrophe (singular nouns)		Megan's, Ravi's, the girl's, the child's, the man's
Words ending in –tion		station, fiction, motion, national, section

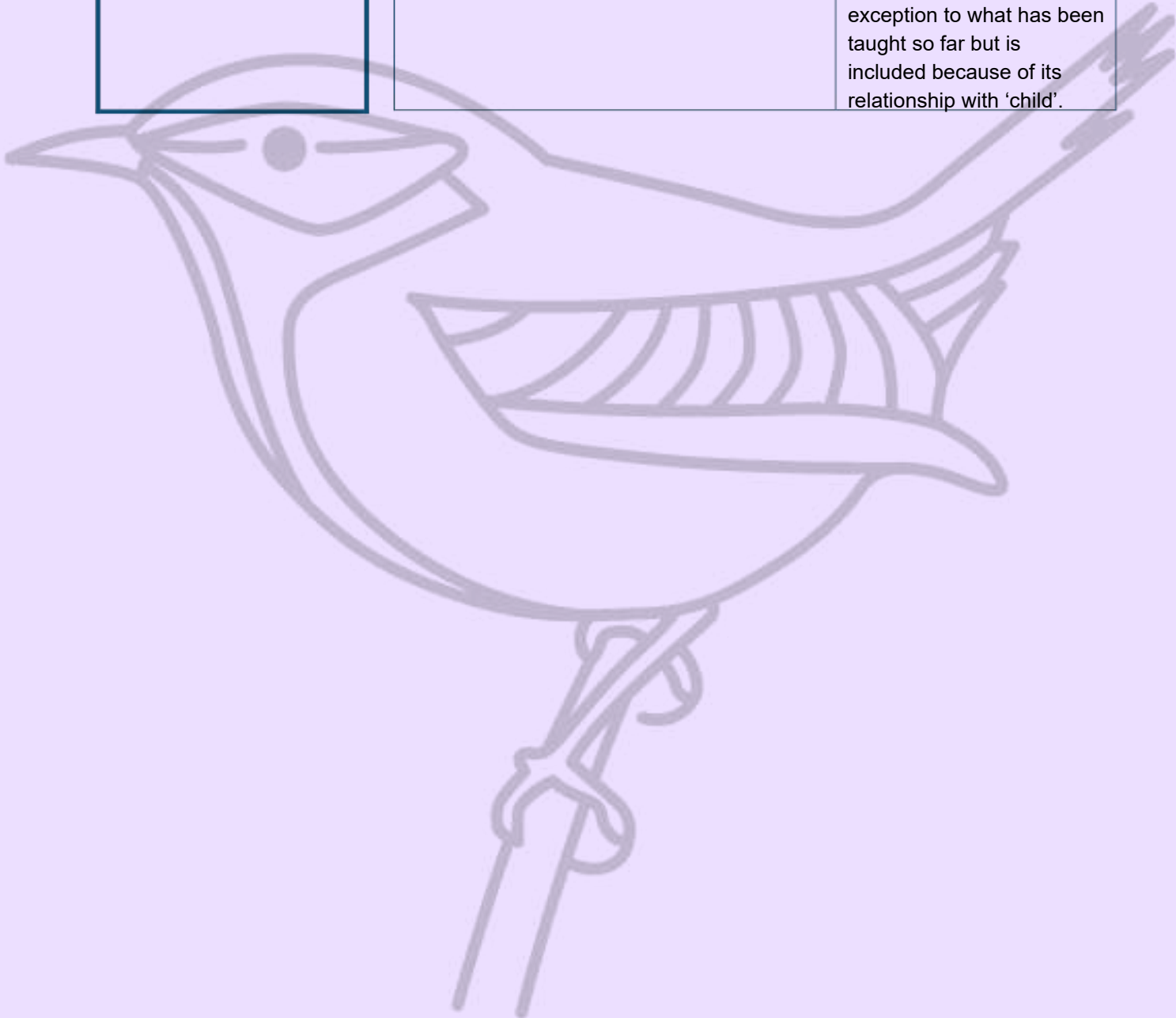
Statutory requirements	Rules and guidance (non-statutory)	Example words (non-statutory)
Homophones and near-homophones	It is important to know the difference in meaning between homophones.	there/their/they're, here/hear, quite/quiet, see/sea, bare/bear, one/won, sun/son, to/too/two, be/bee, blue/blew, night/knight
Common exception words	Some words are exceptions in some accents but not in others – e.g. <i>past</i> , <i>last</i> , <i>fast</i> , <i>path</i> and <i>bath</i> are not exceptions in accents where the <b>a</b> in these words is pronounced /æ/, as in <i>cat</i> .  <i>Great</i> , <i>break</i> and <i>steak</i> are the only common words where the /ei/ sound is spelt <b>ea</b> .	door, floor, poor, because, find, kind, mind, behind, child, children*, wild, climb, most, only, both, old, cold, gold, hold, told, every, everybody, even, great, break, steak, pretty, beautiful, after, fast, last, past, father, class, grass, pass, plant, path, bath, hour, move, prove, improve, sure, sugar, eye, could, should, would, who, whole, any, many, clothes, busy, people, water, again, half, money, Mr, Mrs,



# Spelling Progression at Wren’s Nest Primary School



Statutory requirements	Rules and guidance (non-statutory)	Example words (non-statutory)
		parents, Christmas – and/or others according to programme used. <b>Note:</b> ‘children’ is not an exception to what has been taught so far but is included because of its relationship with ‘child’.



# Spelling Progression at Wren's Nest Primary School



## Spelling – work for years 3 and 4

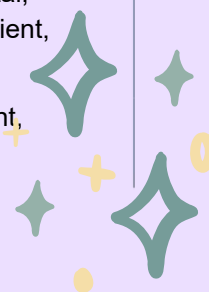
### Revision of work from years 1 and 2

Pay special attention to the rules for adding suffixes.

### New work for years 3 and 4

Statutory requirements	Rules and guidance (non-statutory)	Example words (non-statutory)
Adding suffixes beginning with vowel letters to words of more than one syllable	If the last syllable of a word is stressed and ends with one consonant letter which has just one vowel letter before it, the final consonant letter is doubled before any ending beginning with a vowel letter is added. The consonant letter is not doubled if the syllable is unstressed.	forgetting, forgotten, beginning, beginner, prefer, preferred  gardening, gardener, limiting, limited, limitation
The /ɪ/ sound spelt y elsewhere than at the end of words	These words should be learnt as needed.	myth, gym, Egypt, pyramid, mystery
The /ʌ/ sound spelt ou	These words should be learnt as needed.	young, touch, double, trouble, country
More prefixes	<p>Most prefixes are added to the beginning of root words without any changes in spelling, but see <b>in-</b> below.</p> <p>Like <b>un-</b>, the prefixes <b>dis-</b> and <b>mis-</b> have negative meanings.</p> <p>The prefix <b>in-</b> can mean both 'not' and 'in'/'into'. In the words given here it means 'not'.</p>	<p><b>dis-</b>: disappoint, disagree, disobey</p> <p><b>mis-</b>: misbehave, mislead, misspell (mis + spell)</p> <p><b>in-</b>: inactive, incorrect</p>

Statutory requirements	Rules and guidance (non-statutory)	Example words (non-statutory)
	Before a root word starting with <b>l</b> , <b>in-</b> becomes <b>il</b> .	illegal, illegible
	Before a root word starting with <b>m</b> or <b>p</b> , <b>in-</b> becomes <b>im-</b> .	immature, immortal, impossible, impatient, imperfect
	Before a root word starting with <b>r</b> , <b>in-</b> becomes <b>ir-</b> .	irregular, irrelevant, irresponsible

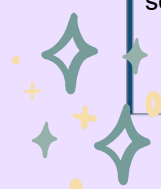


# Spelling Progression at Wren's Nest Primary School



Statutory requirements	Rules and guidance (non-statutory)	Example words (non-statutory)
	<p><b>re-</b> means 'again' or 'back'.</p> <p><b>sub-</b> means 'under'.</p> <p><b>inter-</b> means 'between' or 'among'.</p> <p><b>super-</b> means 'above'.</p> <p><b>anti-</b> means 'against'.</p> <p><b>auto-</b> means 'self' or 'own'.</p>	<p><b>re-</b>: redo, refresh, return, reappear, redecorate</p> <p><b>sub-</b>: subdivide, subheading, submarine, submerge</p> <p><b>inter-</b>: interact, intercity, international, interrelated (inter + related)</p> <p><b>super-</b>: supermarket, superman, superstar</p> <p><b>anti-</b>: antiseptic, anti-clockwise, antisocial</p> <p><b>auto-</b>: autobiography, autograph</p> <p>information, adoration,</p>
The suffix -ation	The suffix <b>-ation</b> is added to verbs to form nouns. The rules already learnt still apply.	sensation, preparation, admiration
The suffix -ly	<p>The suffix <b>-ly</b> is added to an adjective to form an adverb. The rules already learnt still apply.</p> <p>The suffix <b>-ly</b> starts with a consonant letter, so it is added straight on to most root words.</p>	sadly, completely, usually (usual + ly), finally (final + ly), comically (comical + ly)

Statutory requirements	Rules and guidance (non-statutory)	Example words (non-statutory)
	<p><b>Exceptions:</b></p> <p>(1) If the root word ends in -y with a consonant letter before it, the <b>y</b> is changed to <b>i</b>, but only if the root word has more than one syllable.</p> <p>(2) If the root word ends with <b>-le</b>, the <b>-le</b> is changed to <b>-ly</b>.</p> <p>(3) If the root word ends with <b>-ic</b>, <b>-ally</b> is added rather than just <b>-ly</b>, except in the word <i>publicly</i>.</p> <p>(4) The words <i>truly</i>, <i>duly</i>, <i>wholly</i>.</p>	<p>happily, angrily</p> <p>gently, simply, humbly, nobly</p> <p>basically, frantically, dramatically</p>
Words with endings sounding like /ʒə/ or /tʃə/	<p>The ending sounding like /ʒə/ is always spelt <b>-sure</b>.</p> <p>The ending sounding like /tʃə/ is often spelt <b>-ture</b>, but check that the word is not a root</p>	<p>measure, treasure, pleasure, enclosure</p> <p>creature, furniture, picture, nature, adventure</p>



# Spelling Progression at Wren's Nest Primary School



Statutory requirements	Rules and guidance (non-statutory)	Example words (non-statutory)
	word ending in <b>(t)ch</b> with an <b>er</b> ending – e.g. <i>teacher, catcher, richer, stretcher</i> .	
Endings which sound like /ʒən/	If the ending sounds like /ʒən/, it is spelt as <b>-sion</b> .	division, invasion, confusion, decision, collision, television
The suffix -ous	<p>Sometimes the root word is obvious and the usual rules apply for adding suffixes beginning with vowel letters.</p> <p>Sometimes there is no obvious root word.</p> <p><b>-our</b> is changed to <b>-or</b> before <b>-ous</b> is added.</p> <p>A final 'e' of the root word must be kept if the /dʒ/ sound of 'g' is to be kept.</p> <p>If there is an /i:/ sound before the <b>-ous</b> ending, it is usually spelt as <b>i</b>, but a few words have <b>e</b>.</p>	<p>poisonous, dangerous, mountainous, famous, various</p> <p>tremendous, enormous, jealous</p> <p>humorous, glamorous, vigorous</p> <p>courageous, outrageous</p> <p>serious, obvious, curious</p> <p>hideous, spontaneous, courteous</p>

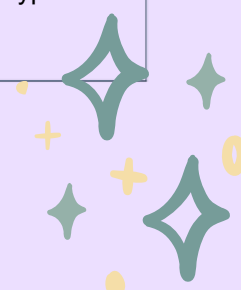


# Spelling Progression at Wren's Nest Primary School



Statutory requirements	Rules and guidance (non-statutory)	Example words (non-statutory)
Endings which sound like /ʃən/, spelt -tion, -sion, -ssion, -cian	<p>Strictly speaking, the suffixes are <b>-ion</b> and <b>-ian</b>. Clues about whether to put <b>t</b>, <b>s</b>, <b>ss</b> or <b>c</b> before these suffixes often come from the last letter or letters of the root word.</p> <p><b>-tion</b> is the most common spelling. It is used if the root word ends in <b>t</b> or <b>te</b>.</p> <p><b>-ssion</b> is used if the root word ends in <b>ss</b> or <b>-mit</b>.</p> <p><b>-sion</b> is used if the root word ends in <b>d</b> or <b>se</b>.</p> <p><b>Exceptions:</b> <i>attend – attention, intend – intention</i>.</p> <p><b>-cian</b> is used if the root word ends in <b>c</b> or <b>cs</b>.</p>	<p>invention, injection, action, hesitation, completion</p> <p>expression, discussion, confession, permission, admission</p> <p>expansion, extension, comprehension, tension</p> <p>musician, electrician, magician, politician, mathematician</p>
Words with the /k/ sound spelt ch (Greek in origin)		scheme, chorus, chemist, echo, character
Words with the /ʃ/ sound spelt ch (mostly French in origin)		chef, chalet, machine, brochure
Words ending with the /g/ sound spelt -gue and the /k/ sound spelt -que (French in origin)		league, tongue, antique, unique
Words with the /s/ sound spelt sc (Latin in origin)	In the Latin words from which these words come, the Romans probably pronounced the <b>c</b> and the <b>k</b> as two sounds rather than one – /s/ /k/.	science, scene, discipline, fascinate, crescent
Words with the /eɪ/ sound spelt ei, eigh, or ey		vein, weigh, eight, neighbour, they, obey

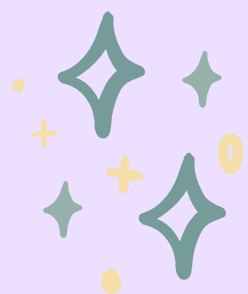
Statutory requirements	Rules and guidance (non-statutory)	Example words (non-statutory)
Possessive apostrophe with plural words	<p>The apostrophe is placed after the plural form of the word; <b>-s</b> is not added if the plural already ends in</p> <p><b>-s</b>, but <i>is</i> added if the plural does not end in <b>-s</b> (i.e. is an irregular plural – e.g. <i>children's</i>).</p>	<p>girls', boys', babies', children's, men's, mice's</p> <p><b>(Note:</b> singular proper nouns ending in an <b>s</b> use the <b>'s</b> suffix e.g. Cyprus's population)</p>



# Spelling Progression at Wren’s Nest Primary School



Statutory requirements	Rules and guidance (non-statutory)	Example words (non-statutory)
Homophones and near-homophones		accept/except, affect/effect, ball/bawl, berry/bury, brake/break, fair/fare, grate/great, groan/grown, here/hear, heel/heal/he'll, knot/not, mail/male, main/mane, meat/meet, medal/meddle, missed/mist, peace/piece, plain/plane, rain/rein/reign, scene/seen, weather/whether, whose/who's



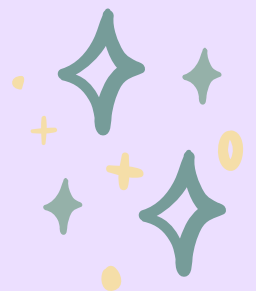
# Spelling Progression at Wren's Nest Primary School



## Word list – years 3 and 4

A large, faint, stylized illustration of a wren bird is in the background, facing left. It has a large eye, a beak, and a long tail with a forked end.

accident(ally)	early	knowledge	purpose
actual(ly)	earth	learn	quarter
address	eight/eighth	length	question
answer	enough	library	recent
appear	exercise	material	regular
arrive	experience	medicine	reign
believe	experiment	mention	remember
bicycle	extreme	minute	sentence
breath	famous	natural	separate
breathe	favourite	naughty	special
build	February	notice	straight
busy/business	forward(s)	occasion(ally)	strange
calendar	fruit	often	strength
caught	grammar	opposite	suppose
centre	group	ordinary	surprise
century	guard	particular	therefore
certain	guide	peculiar	though/although
circle	heard	perhaps	thought
complete	heart	popular	through
consider	height	position	various
continue	history	possess(ion)	weight
decide	imagine	possible	woman/women
describe	increase	potatoes	
different	important	pressure	
difficult	interest	probably	
disappear	island	promise	



# Spelling Progression at Wren's Nest Primary School



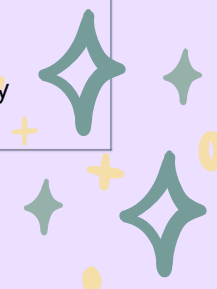
Spelling – years 5 and 6

Revise work done in previous years

New work for years 5 and 6

Statutory requirements	Rules and guidance (non-statutory)	Example words (non-statutory)
Endings which sound like /ʃəs/ spelt –cious or –tious	<p>Not many common words end like this.</p> <p>If the root word ends in <b>–ce</b>, the /ʃ/ sound is usually spelt as <b>c</b> – e.g. <i>vice–vicious</i> , <i>grace–gracious</i>, <i>space –spacious</i> <i>malice –malicious</i>.</p> <p><b>Exception:</b> <i>anxious</i> is common after a vowel</p>	vicious, precious, conscious, delicious, malicious, suspicious, ambitious, cautious, fictitious, infectious, nutritious
Endings which sound like /ʃəl/	<p>letter and <b>–tial</b> after a consonant letter, but there are some exceptions.</p> <p><b>Exceptions:</b> initial, financial, commercial, provincial (the spelling of the last three is clearly related to <i>finance</i>, <i>commerce</i> and <i>province</i>).</p>	official, special, artificial, partial, confidential, essential
Words ending in –ant, –ance/–ancy, –ent, –ence/–ency	<p>Use <b>–ant</b> and <b>–ance/–ancy</b> if there is a related word with a /æ/ or /eɪ/ sound in the right position; <b>–ation</b> endings are often a clue.</p> <p>Use <b>–ent</b> and <b>–ence/–ency</b> after soft <b>c</b> (/s/ sound), soft <b>g</b> (/dʒ/ sound) and <b>qu</b>, or if there is a related word with a clear /ɛ/ sound in the right position.</p> <p>There are many words, however, where the above guidance does not help. These words just have to be learnt.</p>	<p>observant, observance, (observ<u>a</u>tion), expectant (expect<u>a</u>tion), hesitant, hesitancy (hesit<u>a</u>tion), tolerant, tolerance (toler<u>a</u>tion), substance (subst<u>a</u>ntial)</p> <p>innocent, innocence, decent, decency, frequent, frequency, confident, confidence (confid<u>e</u>ntial)</p> <p>assistant, assistance, obedient, obedience, independent, independ<u>e</u>nce</p>

Statutory requirements	Rules and guidance (non-statutory)	Example words (non-statutory)
Words ending in –able and –ible	<p>The <b>–able/–ably</b> endings are far more common than the <b>–ible/–ibly</b> endings.</p> <p>As with <b>–ant</b> and <b>–ance/–ancy</b>, the <b>–able</b> ending is used if there is a related word ending in <b>–ation</b>.</p>	<p>adorable/adorably (adoration), applicable/applicably (applic<u>a</u>tion), considerable/considerably</p>

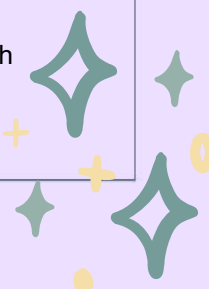


# Spelling Progression at Wren's Nest Primary School



Statutory requirements	Rules and guidance (non-statutory)	Example words (non-statutory)
Words ending in – ably and –ibly	<p>If the <b>–able</b> ending is added to a word ending in <b>–ce</b> or <b>–ge</b>, the <b>e</b> after the <b>c</b> or <b>g</b> must be kept as those letters would otherwise have their ‘hard’ sounds (as in <i>cap</i> and <i>gap</i>) before the <b>a</b> of the <b>–able</b> ending.</p> <p>The <b>–able</b> ending is usually but not always used if a complete root word can be heard before it, even if there is no related word ending in <b>–ation</b>. The first five examples opposite are obvious; in <i>reliable</i>, the complete word <i>rely</i> is heard, but the <b>y</b> changes to <b>i</b> in accordance with the rule.</p> <p>The <b>–ible</b> ending is common if a complete root word can’t be heard before it but it also sometimes occurs when a complete word <i>can</i> be heard (e.g. <i>sensible</i>).</p>	<p>(consideration), tolerable/tolerably (toleration)</p> <p>changeable, noticeable, forcible, legible</p> <p>dependable, comfortable, understandable, reasonable, enjoyable, reliable</p> <p>possible/possibly, horrible/horribly, terrible/terribly, visible/visibly, incredible/incredibly, sensible/sensibly</p>
Adding suffixes beginning with vowel letters to words ending in –fer	<p>The <b>r</b> is doubled if the <b>–fer</b> is still stressed when the ending is added.</p> <p>The <b>r</b> is not doubled if the <b>–fer</b> is no longer stressed.</p>	<p>referring, referred, referral, preferring, preferred, transferring, transferred</p> <p>reference, referee, preference, transference</p>
Use of the hyphen	Hyphens can be used to join a prefix to a root word, especially if the prefix ends in a vowel letter and the root word also begins with one.	co-ordinate, re-enter, co-operate, co-own

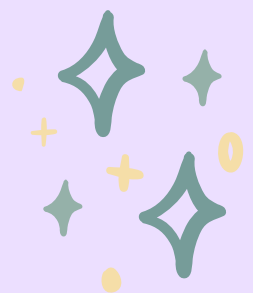
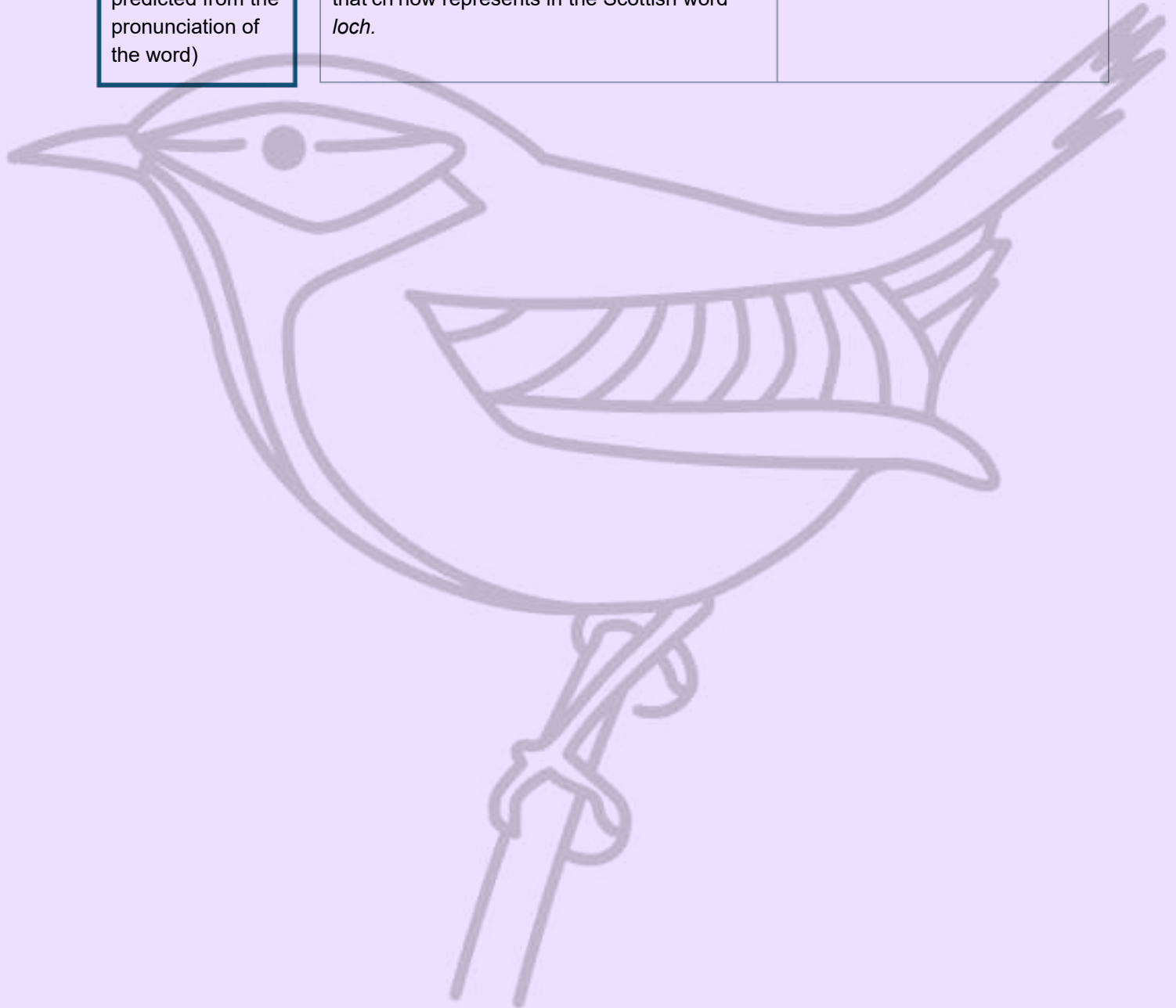
Statutory requirements	Rules and guidance (non-statutory)	Example words (non-statutory)
Words with the /i:/ sound spelt ei after c	<p>The ‘i before e except after c’ rule applies to words where the sound spelt by <b>ei</b> is /i:/.</p> <p><b>Exceptions:</b> <i>protein</i>, <i>caffeine</i>, <i>seize</i> (and <i>either</i> and <i>neither</i> if pronounced with an initial /i:/ sound).</p>	deceive, conceive, receive, perceive, ceiling
Words containing the letter-string ough	<b>ough</b> is one of the trickiest spellings in English – it can be used to spell a number of different sounds.	<p>ought, bought, thought, nought, brought, fought</p> <p>rough, tough, enough</p> <p>cough</p> <p>though, although, dough</p> <p>through</p> <p>thorough, borough</p>



# Spelling Progression at Wren's Nest Primary School



Statutory requirements	Rules and guidance (non-statutory)	Example words (non-statutory)
		plough, bough
Words with 'silent' letters (i.e. letters whose presence cannot be predicted from the pronunciation of the word)	Some letters which are no longer sounded used to be sounded hundreds of years ago: e.g. in <i>knight</i> , there was a /k/ sound before the /n/, and the <b>gh</b> used to represent the sound that 'ch' now represents in the Scottish word <i>loch</i> .	doubt, island, lamb, solemn, thistle, knight



# Spelling Progression at Wren's Nest Primary School



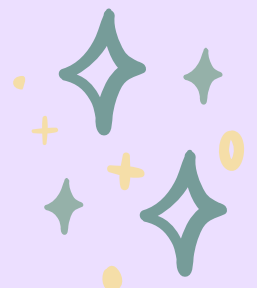
Statutory requirements	Rules and guidance (non-statutory)	Example words (non-statutory)
<p>Homophones and other words that are often confused</p>	<p>In the pairs of words opposite, nouns end <b>-ce</b> and verbs end <b>-se</b>. <i>Advice</i> and <i>advise</i> provide a useful clue as the word <i>advise</i> (verb) is pronounced with a /z/ sound – which could not be spelt <b>c</b>.</p> <p><u>More examples:</u></p> <p>aisle: a gangway between seats (in a church, train, plane).  isle: an island.  aloud: out loud.  allowed: permitted.</p> <p>affect: usually a verb (e.g. <i>The weather may affect our plans</i>).  effect: usually a noun (e.g. <i>It may have an effect on our plans</i>). If a verb, it means 'bring about' (e.g. <i>He will effect changes in the running of the business</i>).</p> <p>altar: a table-like piece of furniture in a church.  alter: to change.</p> <p>ascent: the act of ascending (going up).  assent: to agree/agreement (verb and noun).  bridal: to do with a bride at a wedding.  bridle: reins etc. for controlling a horse.  cereal: made from grain (e.g. breakfast cereal).  serial: adjective from the noun <i>series</i> – a succession of things one after the other.  compliment: to make nice remarks about someone (verb) or the remark that is made (noun).  complement: related to the word <i>complete</i> – to make something complete or more complete (e.g. <i>her scarf complemented her outfit</i>).</p>	<p>advice/advise  device/devise  licence/license  practice/practise  prophecy/prophecy</p> <p>farther: further  father: a male parent  guessed: past tense of the verb <i>guess</i>  guest: visitor</p> <p>heard: past tense of the verb <i>hear</i>  herd: a group of animals</p> <p>led: past tense of the verb <i>lead</i>  lead: present tense of that verb, or else the metal which is very heavy (<i>as heavy as lead</i>)</p> <p>morning: before noon  mourning: grieving for someone who has died</p> <p>past: noun or adjective referring to a previous time (e.g. <i>In the past</i>) or preposition or adverb showing place (e.g. <i>he walked past me</i>)  passed: past tense of the verb 'pass' (e.g. <i>I passed him in the road</i>)</p> <p>precede: go in front of or before  proceed: go on</p>



# Spelling Progression at Wren's Nest Primary School



Statutory requirements	Rules and guidance (non-statutory)	Example words (non-statutory)
Homophones and other words that are often confused (continued)	<p>descent: the act of descending (going down).</p> <p>dissent: to disagree/disagreement (verb and noun).</p> <p>desert: as a noun – a barren place (stress on first syllable); as a verb – to abandon (stress on second syllable)</p> <p>dessert: (stress on second syllable) a sweet course after the main course of a meal.</p> <p>draft: noun – a first attempt at writing something; verb – to make the first attempt; also, to draw in someone (e.g. <i>to draft in extra help</i>)</p> <p>draught: a current of air.</p>	<p>principal: adjective – most important (e.g. <i>principal ballerina</i>) noun – important person (e.g. <i>principal of a college</i>)</p> <p>principle: basic truth or belief</p> <p>profit: money that is made in selling things</p> <p>prophet: someone who foretells the future</p> <p>stationary: not moving</p> <p>stationery: paper, envelopes etc.</p> <p>steal: take something that does not belong to you</p> <p>steel: metal</p> <p>wary: cautious</p> <p>weary: tired</p> <p>who's: contraction of <i>who is</i> or <i>who has</i></p> <p>whose: belonging to someone (e.g. <i>Whose jacket is that?</i>)</p>



# Spelling Progression at Wren's Nest Primary School



## Word list – years 5 and 6

accommodate	existence	rhyme
accompany	explanation	rhythm
according	familiar	sacrifice
achieve	foreign	secretary
aggressive	forty	shoulder
amateur	frequently	signature
ancient	government	sincere(ly)
apparent	guarantee	soldier
appreciate	harass	stomach
attached	hindrance	sufficient
available	identity	suggest
average	immediate(ly)	symbol
awkward	individual	system
bargain	interfere	temperature
bruise	interrupt	thorough
category	language	twelfth
cemetery	leisure	variety
committee	lightning	vegetable
communicate	marvellous	vehicle
community	mischievous	yacht
competition	muscle	
conscience*	necessary	
conscious*	neighbour	
controversy	nuisance	
convenience	occupy	
correspond	occur	
criticise (critic + ise)	opportunity	
curiosity	parliament	
definite	persuade	
desperate	physical	
determined	prejudice	
develop	privilege	
dictionary	profession	
disastrous	programme	
embarrass	pronunciation	
environment	queue	
equip (–ped, –ment)	recognise	
especially	recommend	
exaggerate	relevant	
excellent	restaurant	

