

Geography knowledge organiser

Back to the Future

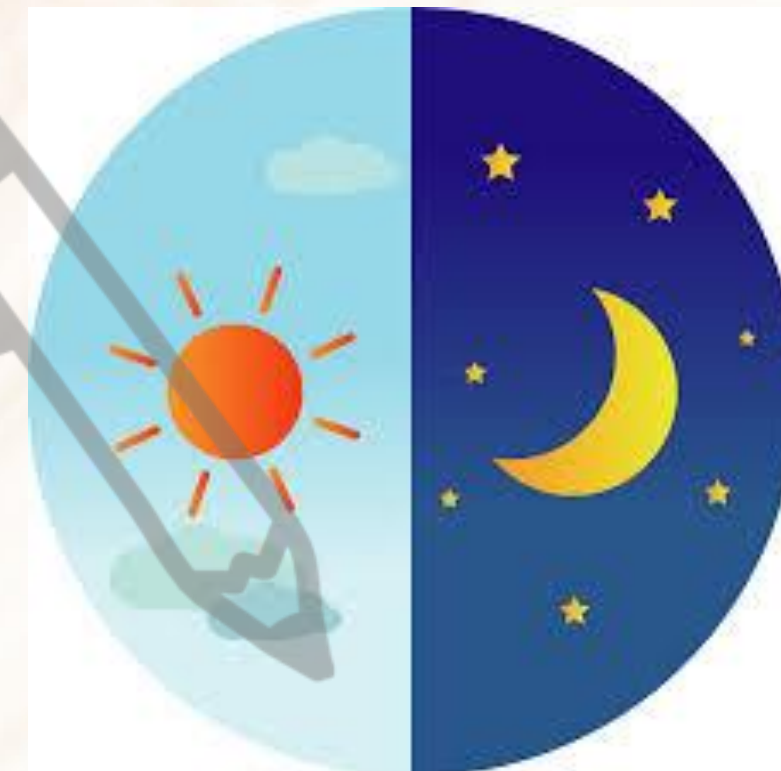
Key Vocabulary:

- *Globe*
- *Rotation*
- *Longitude*
- *Latitude*
- *Axis*
- *Co-ordinated universal time*
- *Greenwich meantime*
- *Prime Meridian*
- *Time Zone*
- *Antemeridian*
- *Border*
- *Daylight saving time*

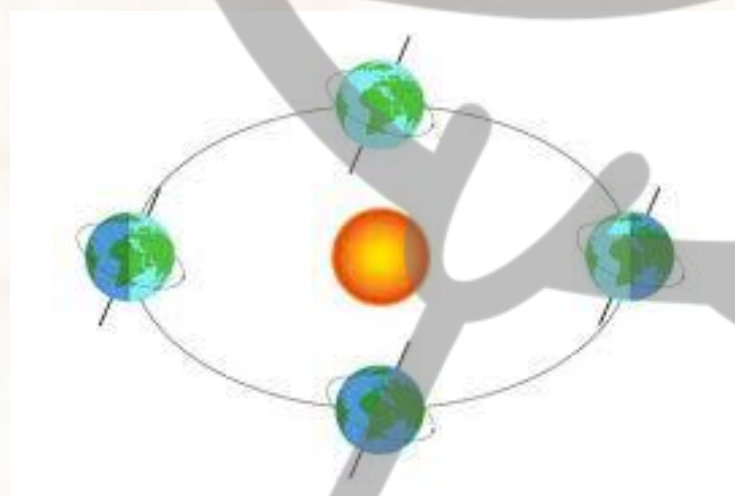
Why do we have day and night?

This **rotation** gives us night and day.

At any moment, half of Earth faces the sun and experiences the light and heat from the sun's rays while the other half is in darkness.



How were time zones created?



Daylight happens when places face towards the sun.

Planet Earth is constantly rotating on its **axis**. It makes one full rotation every 24 hours.

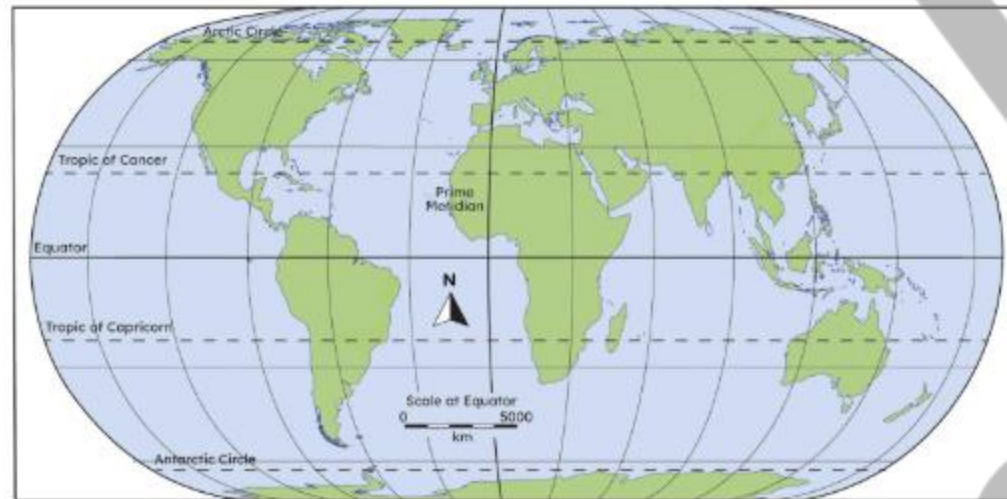
Places across the globe experience midday at different times.

Geography knowledge organiser

Back to the Future

Can we time travel?

The half of the Earth west of the Prime Meridian is known as the '**Western Hemisphere**', and everything to the east is called the '**Eastern Hemisphere**'.



Did you know?

If you fly east across the International Date Line, today becomes yesterday!

Have a think...

The international Date Line makes the start of a new calendar day. Which places celebrate New Year's Day first? The UK or Australia?

