

Geography - Amazonian Adventures

Key Vocabulary

Physical feature	Natural landmark such as a river or mountain
Tributaries	A stream or river that flows into a main stream
Layers	The rainforest is divided into four layers. In each layer a range of different animals and plants live.

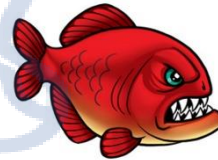
South America

South America is the fourth largest continent in size and the fifth largest in population. It is located primarily in the southern hemisphere. It is bordered by the Atlantic Ocean to the east and the Pacific Ocean to the west. The geography is dominated by the Andes Mountain Range and the Amazon River (second longest river in the world).



Can you count how many countries there are in South America?

What is the largest country?



The Amazon River

- The river is approximately 4,000 miles long, mostly flowing through rainforests.
- It has around 200 tributaries.
- It begins in the Andes.
- Piranhas, Anacondas and thousands of species of fish can be found here.

Geography - Amazonian Adventures

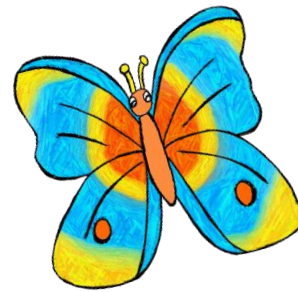
The Amazon Rainforest

The Amazon rainforest is home to many of the world's animals.

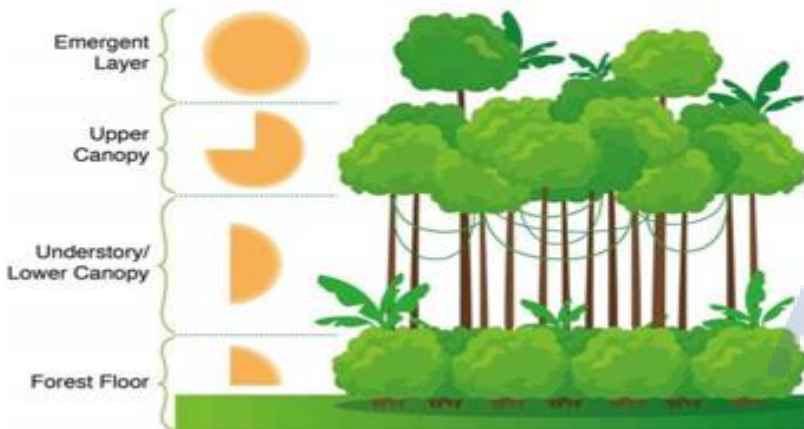
Can you find out what the smallest and largest animals are?

What do you think is the meanest looking animal in the rainforest?

Rainforests are important to the world because they regulate the world's climate, they store nearly half of the world's rainwater and they contain plants that are used in modern medicines.



Rainforest Layers of Vegetation



The Andes Mountain

The highest peak of the mountain range is Aconcagua which rises to a height of 6,962m.

The Andes stretches over seven countries in South America.

Can you find out what the seven countries are?

